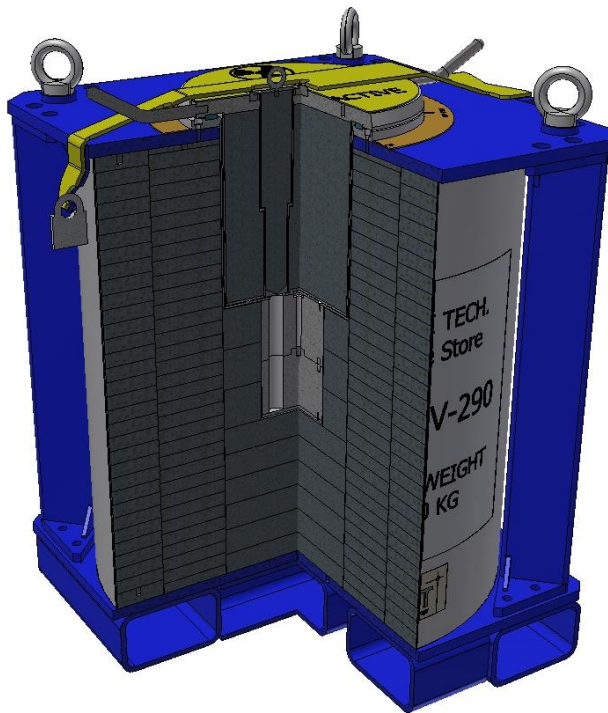


# Emergency Repair Equipment

Gemini technology have recently reacted to our customers requirements to respond to a mechanical failure in 3<sup>rd</sup> party Irradiators which could result in a hazardous stuck source condition.



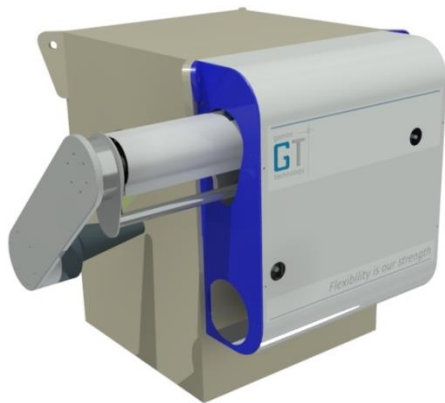
## GT-SSV (Source Storage Vessels)

Gemini produce a range of different SSV's each tailored to suit our customers specific requirements. Being modular in construction they can easily be moved, or disassembled and reassembled to provide a safe source storage to any location.

The entire range are fully compatible with existing 3<sup>rd</sup> party transfer equipment, and come with source ID tags, unique to the customer which clearly identify sources and positions. A security strap and padlock makes for a completely tamperproof solution.

An essential piece of maintenance equipment should sources need to be removed from your Calibration systems for any kind of non-routine or failure related action.

See overleaf for more details.



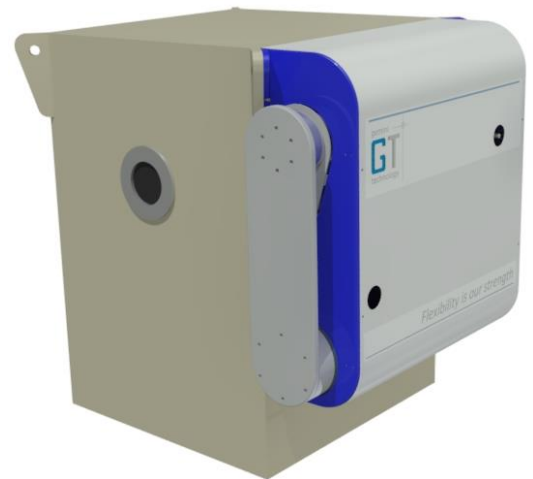
## Automatic Collimator Plug

GEMINI have recently designed and built a remotely operated collimator plug intended for use with 3<sup>rd</sup> party Irradiators already in operation.

With these systems proving increasingly unreliable and incidents of sources becoming stuck in exposed positions, GEMINI felt something should be added to make them completely safe.

## Key Features

- GEMINI has designed and built an automatic collimator plug.
- Securely mounts to the side of any existing 3<sup>rd</sup> party Irradiator.
- Makes system safe if a source gets stuck in an exposed position.
- Minimises operator & maintenance worker radiation dose.
- Remotely operated from the control,
- Lead plug is powered into the collimator of the irradiator
- Powered via two electromechanical actuators.
- Can be manually driven via hand wheel during power outage.
- Simple proven control system independent from Irradiator control.



# Emergency Repair Equipment

Gemini technology have recently reacted to our customers requirements to respond to a mechanical failure in 3<sup>rd</sup> party Irradiators which could result in a hazardous stuck source condition.

## GT-SSV-120

Smallest model GEMINI produce, giving safe source storage for source activity up to 1.9TBq (Cs-137) and equivalent, providing an external dose rate of <1uSv/hr.

Weighing in at 600 KG, it can safely house up to 8 sources plus a blank position in 5 wells of Ø29 X 210 long. Compact in size, with a footprint of 600mm x 600mm and 680mm high.



## GT-SSV-200

This is the middle model in the GEMINI SSV range, given safe storage for source activity up to 5.5 Tbq (Cs-137) and equivalent, providing an external dose-rate of <1uSv/hr.

Weighing in at 2,000 KG, it can safely house up to 10 sources plus a blank position in 6 wells of Ø29 x 210 long. External footprint of 750mm x 750mm x 850mm high.



## GT-SSV-290

The largest model GEMINI produce, giving the greatest shielding, allowing for the safe storage of the largest known Gamma sources currently in use. 6 TBq (Co-60), providing an external dose-rate of <1uSv/hrs

Weighing in at 4,250 KG, it can safely house up to 10 sources plus a blank position in 3 wells of Ø29 x 210 and 3 wells of Ø45 x 210 long. Compact in size, with a footprint of 750mm x 750mm and 1000mm high.

A range of sizes are available, to suit any requirement.

